

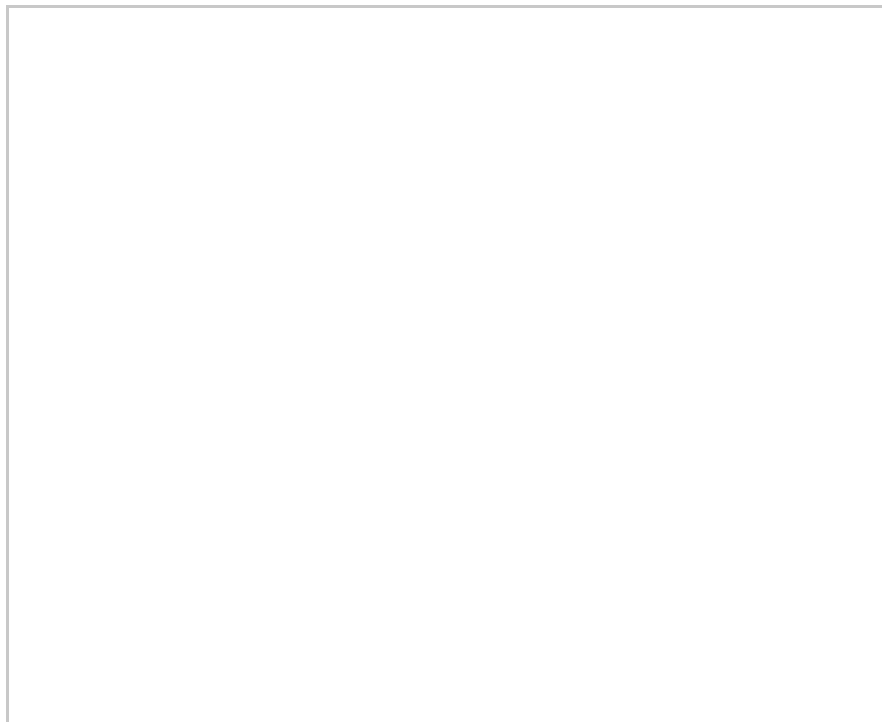
1010 The Hive 7, Masshouse Plaza

Birmingham, B5 5JN

£925 PCM



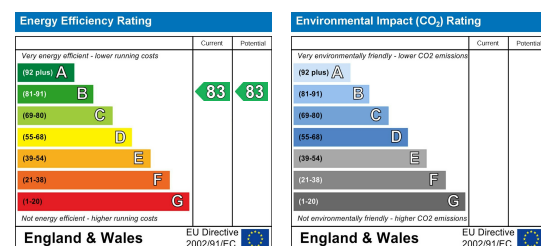
Floor Plan



Area Map



Energy Efficiency Graph



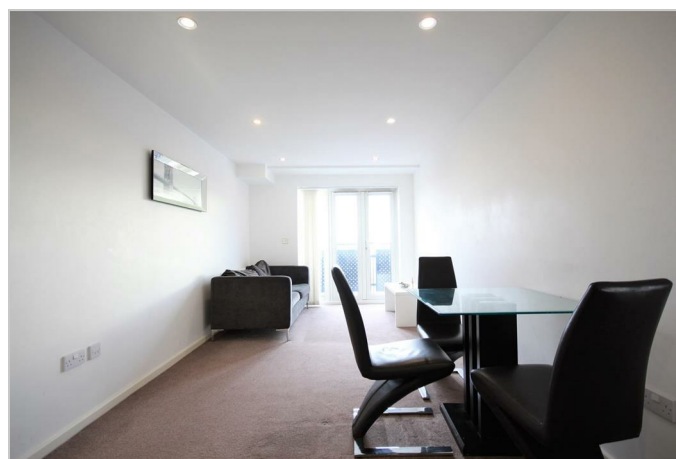
Viewing

Please contact our LV PROPERTY Office on 01212857575 if you wish to arrange a viewing appointment for this property or require further information.

- ONE BEDROOM
- FURNISHED
- AVAILABLE NOVEMBER
- 10TH FLOOR APARTMENT
- SECURED FOB ACCESS
- STUNNING SKYLINE VIEWS

LV PROPERTY is pleased to offer this light and spacious large one-bedroom apartment at the perfectly located Hive, Masshouse Plaza. A short walk from Aston and Birmingham City Universities and New Street Station. This property is centrally located with excellent transport links providing access to the surrounding area.

The apartment comprises an entrance hallway with a utility cupboard, a spacious open plan living space, a fitted contemporary kitchen and bathroom with high-end integrated appliances, and a generous double bedroom. The building boasts secure fob access. Viewings are highly recommended.



These particulars, whilst believed to be accurate are set out as a general outline only for guidance and do not constitute any part of an offer or contract. Intending purchasers should not rely on them as statements of representation of fact, but must satisfy themselves by inspection or otherwise as to their accuracy. No person in this firm's employment has the authority to make or give any representation or warranty in respect of the property.



0121 285 7575
www.lvproperty.co.uk

157c Warstone Lane, Jewellery Quarter,
Birmingham, West Midlands, B18 6NZ